



GMT MONTHLY MEMBERSHIP PROGRESS REPORT

Results as of: 6/30/2025

Multiple District 17

LOCATION: KANSAS

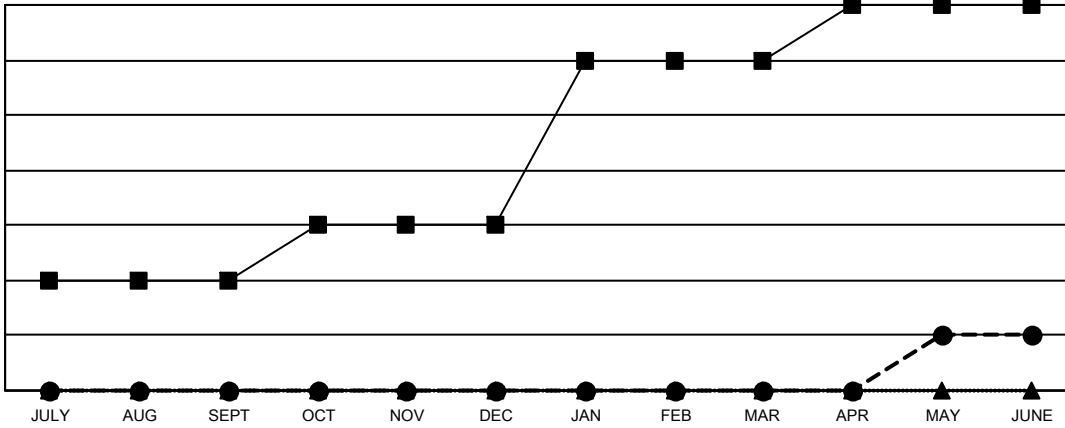
GMT: OPEN

GMT CA 1

Clubs			
RESULTS FOR 2024-2025			
QUARTER	NEW CLUB GOAL	NEW CLUBS	DROPPED CLUBS
JULY/AUG/SEPT	2	0	1
OCT/NOV/DEC	1	0	0
JAN/FEB/MAR	3	0	2
APR/MAY/JUNE	1	1	2

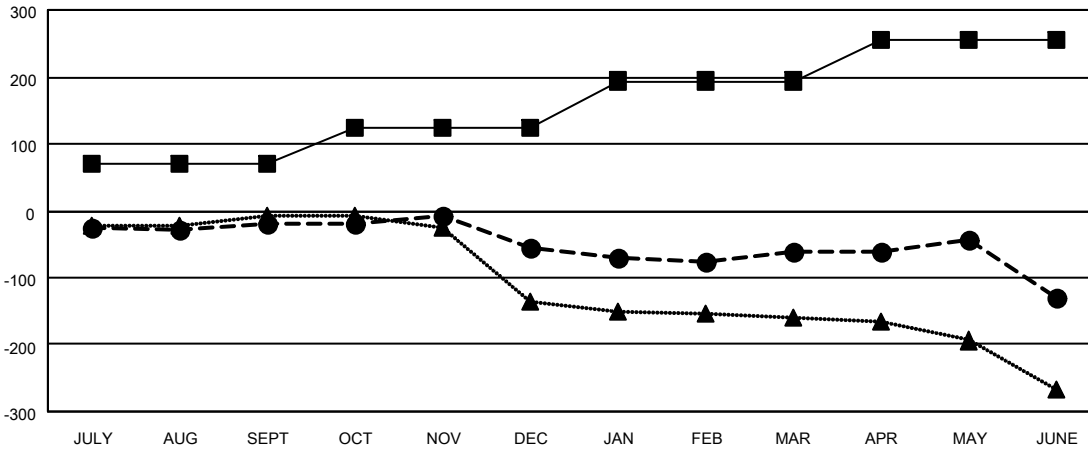
Members			
RESULTS FOR 2024-2025			
QUARTER	MEMBER GROWTH NET GOAL	MEMBER GROWTH ACTUAL	DROPPED MEMBERS ACTUAL (including transfers)
JULY/AUG/SEPT	71	96	103
OCT/NOV/DEC	52	80	109
JAN/FEB/MAR	71	88	87
APR/MAY/JUNE	60	119	179

GOALS AND ACTUAL NEW CLUBS CUMULATIVE



- - CURRENT YEAR GOALS FOR NEW CLUBS
- - CURRENT YEAR ACTUAL NEW CLUBS
- ▲ - LAST YEAR ACTUAL NEW CLUBS

GOALS AND ACTUAL MEMBERS CUMULATIVE



- - MEMBER GROWTH NET GOAL
- - MEMBER GROWTH ACTUAL
- ▲ - LAST YEAR MEMBERSHIP ACTUAL

DROPPED CLUBS: 5	
DROPPED MEMBERS	
DECEASED	62
CLUB CANCELLED	8
OTHER	407
TOTAL	477

101 CLUBS OF 204 ADDED 1 OR MORE NEW MEMBERS

GENDER DISTRIBUTION	
MALE	2,533 (65.78%)
FEMALE	1,318 (34.22%)

[CLICK HERE FOR CUMULATIVE MEMBERSHIP DATA](#)

TOTAL FAMILY UNIT MEMBERS	861
FAMILY MEMBERS PAYING HALF DUES	440